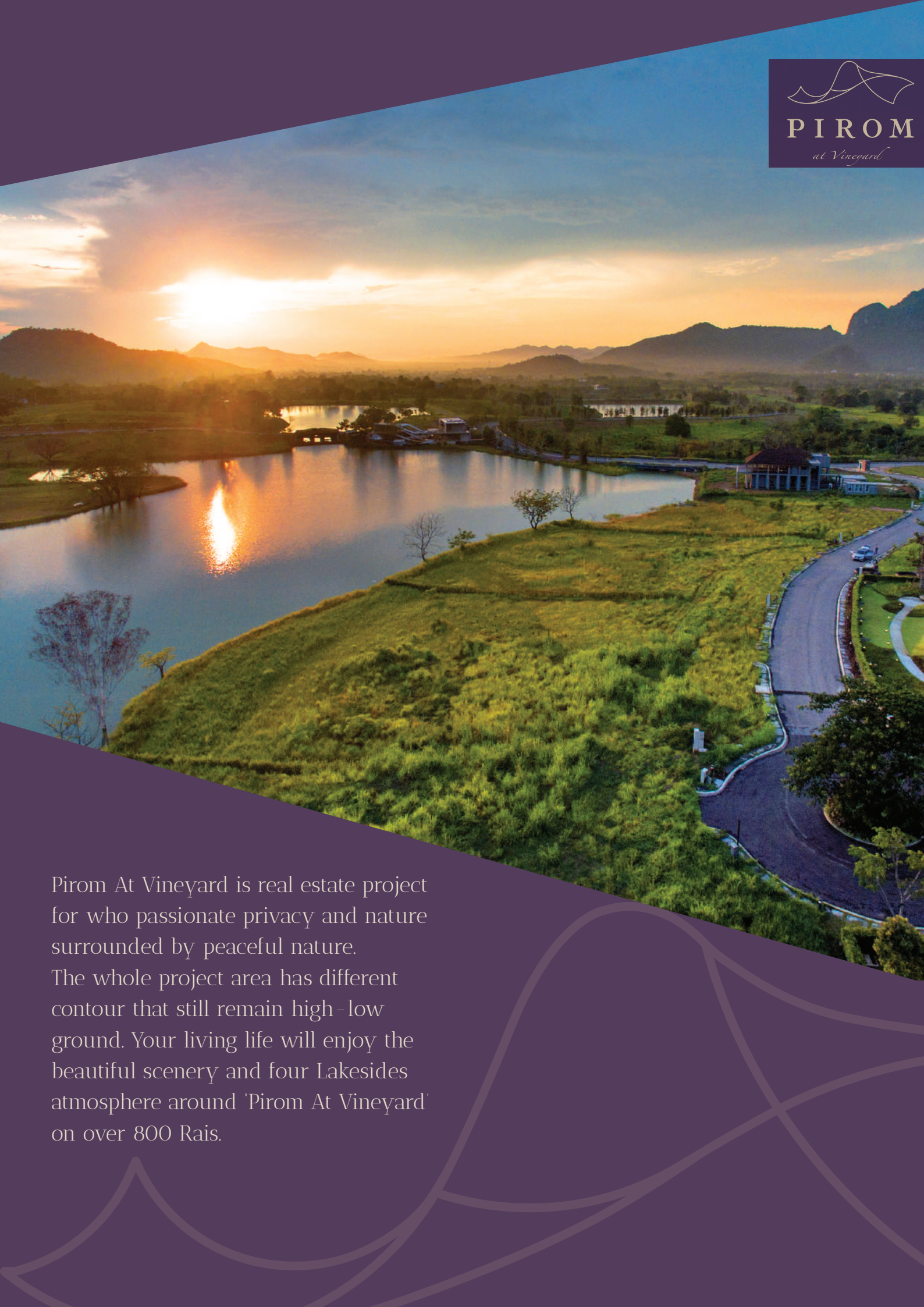




PIROM

at Vineyard

Living Beyond Luxury

An aerial photograph of a large, calm lake at sunset. The sun is low on the horizon, creating a bright orange and yellow glow across the sky and reflecting on the water's surface. The surrounding landscape is lush green with rolling hills and a paved road curving along the right side of the lake. In the distance, there are mountains and some buildings near the water's edge.

Pirom At Vineyard is real estate project for who passionate privacy and nature surrounded by peaceful nature. The whole project area has different contour that still remain high-low ground. Your living life will enjoy the beautiful scenery and four Lakesides atmosphere around 'Pirom At Vineyard' on over 800 Rais.

MASTER PLAN



Developer: Piya International Co.,LTD

Land Area: 800 Rais

No. of zone: 2 zone (A and B)

LOCATION: Pirom At Vineyard is located at Kut Khla - Pansuk Road, Phayayen, Pakchong, Nakhon Ratchasima. To travel from Bangkok to Pirom At Vineyard, It takes about 1 - 2 hour by taking the route from Bang Pa In to Mittraphap Road and driving for 2 more kilometers same direction as PB Valley. The destination is Pirom At Vineyard which has total land over 800 Rais and currently developing 2 Phases.

PHASE A (LAKE VIEW)



Phase A Lake View

Land Size: 45 Rais

No. of Plots: 22 Plots

Plot size: 400 - 1400 sq.wah.

STARTING PRICE

55,000 THB per square wah

This price may be changed without prior notice

PHASE B (MOUNTAIN VIEW)



Phase B Mountain View

Land Size: 54 Rais


No. of Plots: 50 Plots

Plot size: 350 - 600 sq.wah.

STARTING PRICE

40,000 THB per square wah

This price may be changed without prior notice

The background of the advertisement is a photograph of a large, modern house at dusk. The house has a dark, textured exterior and a prominent balcony with a glass railing. The interior lights are on, and the balcony is illuminated. In the foreground, there is a field of tall, light-colored grasses. The sky is a mix of purple and blue, indicating twilight. The overall mood is serene and luxurious.

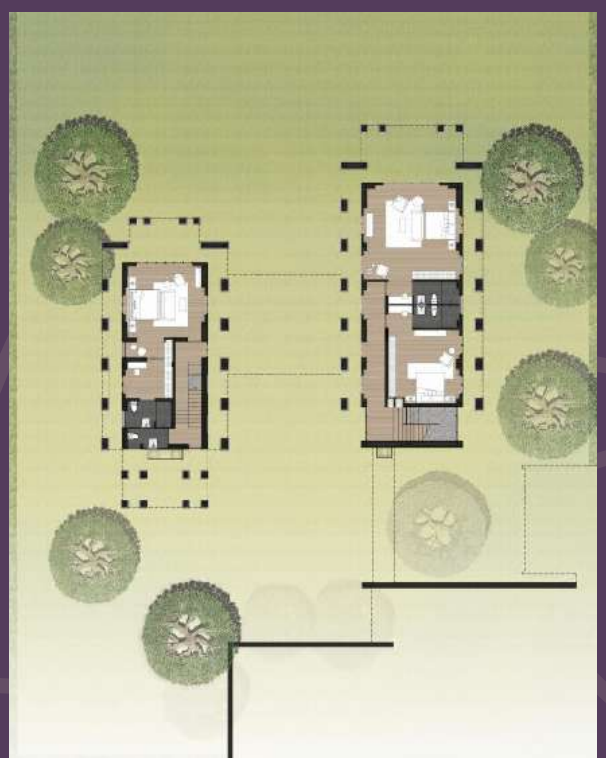
You can select home designs that are designed by the leading architect, Boonlert Hemvijitraphan. Creating and caring every detail by selecting natural materials without artificiality to keep luxurious made Valley house be comfortable in nature, wind, sun, and let you explore the most appealing scenery all dimensions. Four house types include Valley, Courtyard, Barn, and Horizontal.

VALLEY



Gross Area: 893 sq.m.
Usable Area: 495 sq.m.

- 4 Bedrooms
- 6 Bathrooms
- 5 Parking spaces
- 2 Maid rooms
- 1 Maid bathroom





PIROM

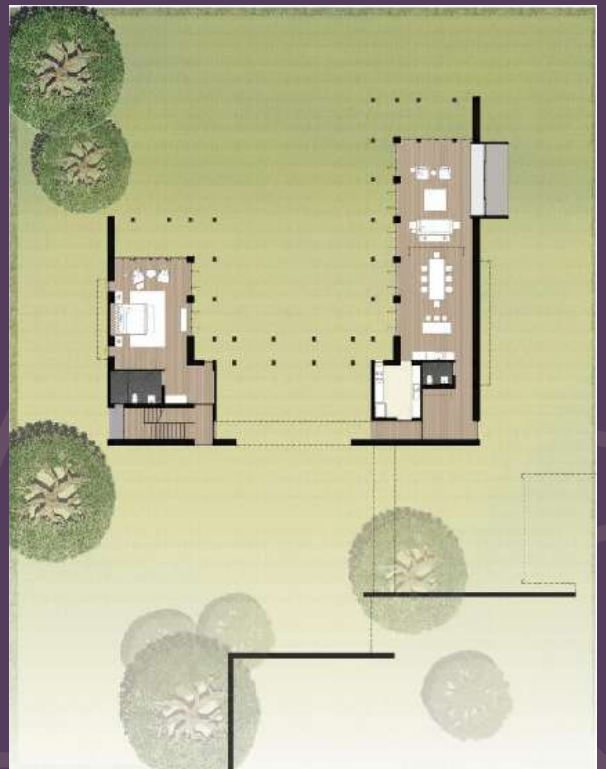
at Vineyard

COURTYARD



Gross Area: 830 sq.m.
Usable Area: 477 sq.m.

- 4 Bedrooms
- 5 Bahtrooms
- 5 Parking spaces
- 2 Maid rooms
- 1 Maid bahtroom

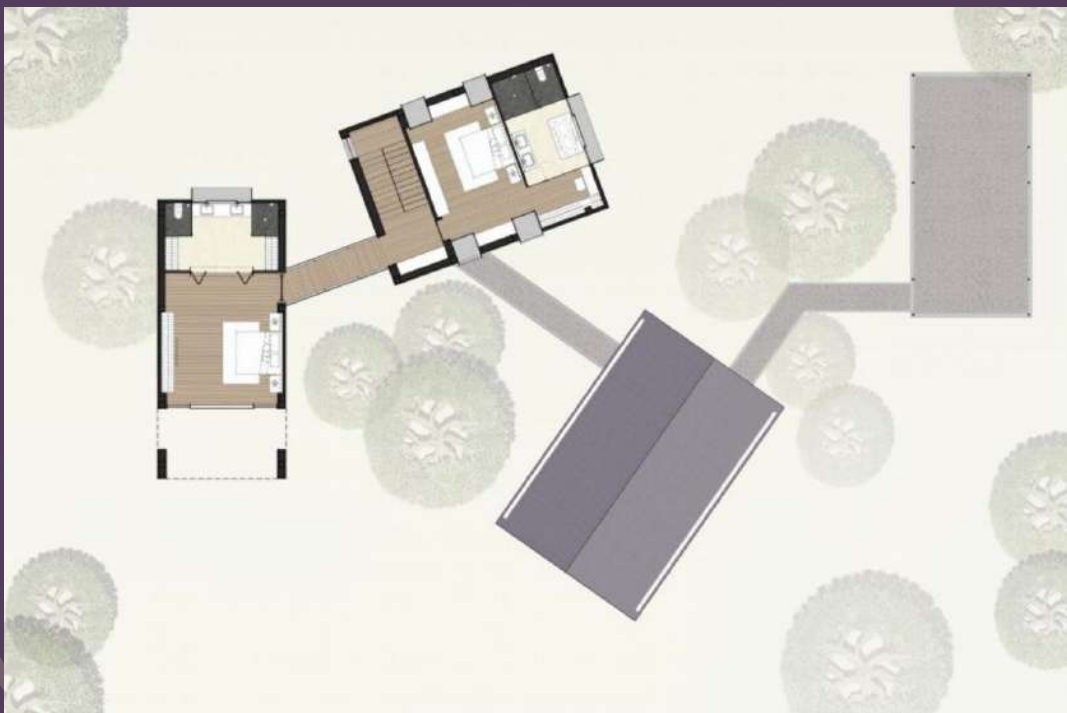


BARN



Gross Area: 689 sq.m.
Usable Area: 380 sq.m.

- 3 Bedrooms
- 4 Bathrooms
- 2 Parking spaces
- 1 Maid room
- 1 Maid Bathroom



HORIZON



Gross Area: 597 sq.m.
Usable Area: 289 sq.m.

- 3 Bedrooms
- 4 Bath rooms
- 2 Parking spaces





TRANSPORTATION



M6 Bang Pa-in - Nakhon Ratchasima Motorway

Toll Plaza

- | | |
|--------------|-----------------|
| 1 Bang Pa-in | 6 Muak Lek |
| 2 Wang Noi | 7 Pak Chong |
| 3 Hin Kong | 8 Sikho |
| 4 Saraburi | 9 Kham Thale So |
| 5 Kaeng Khoi | |



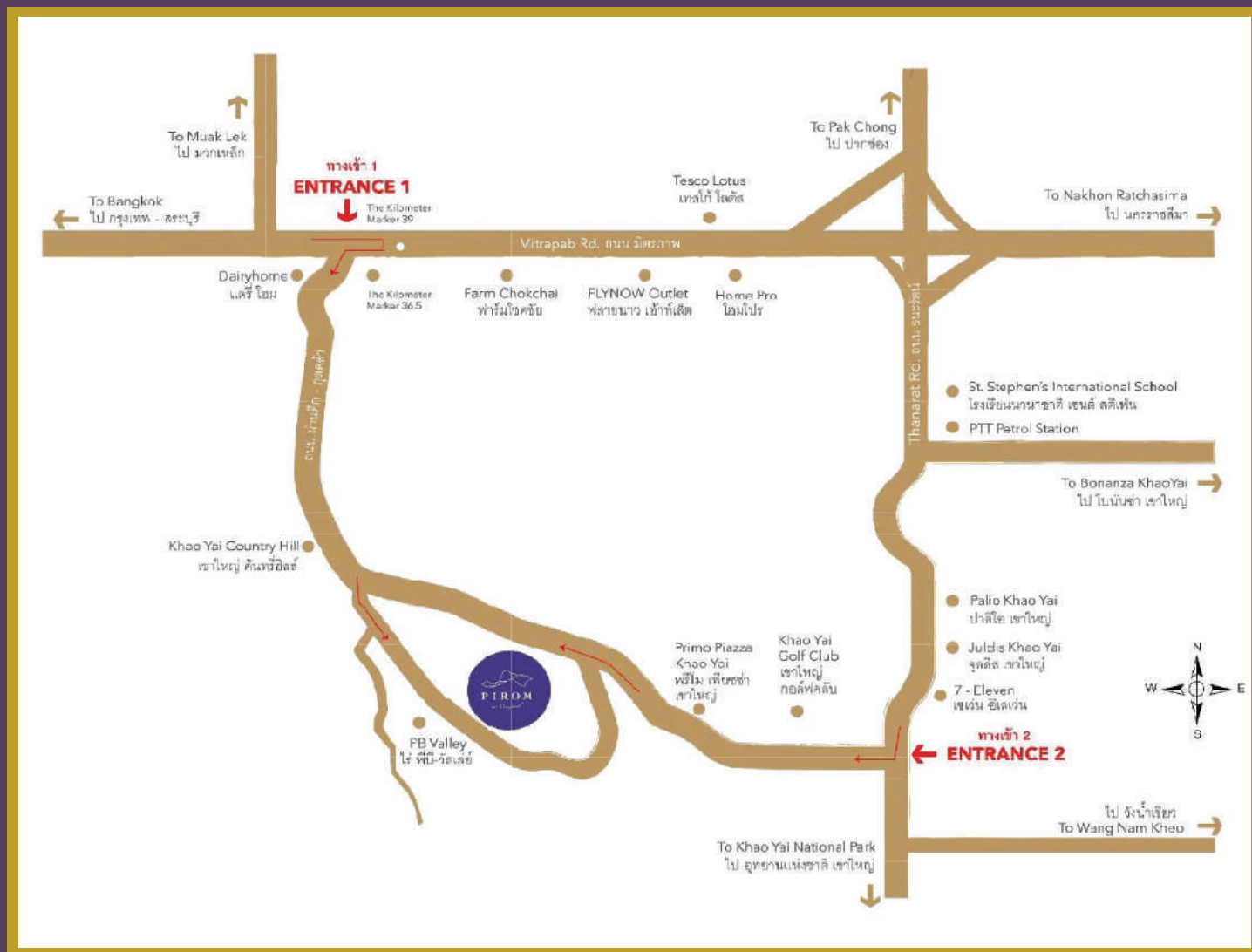
Currently, the government is running under constructed infrastructure projects which are motorway and high speed railway. Bang Pa In - Korat Motorway, you can take the nearest exit at Muak Lek.

THAI-CHINESE HIGH SPEED RAIL



High-speed railway Bangkok - Nakhon Ratchasima is under construction, you can take the railway from Bang Sue to nearest exit Kaeng Khoi station. Motorway and High Speed Rail are expected to be finished by 2022. In the near future, traveling from Bangkok to Pirom At Vineyard will be more convenient.

PROJECT LOCATION



CONTACT US

Sales Gallery (Onsite)

Pirom At Vineyard
234 Moo 5 , Praya-Yen sub-district , Pak Chong District , Nakhon Ratchasima 30320
Tel: 094-782-5442
Open daily from 9 AM - 6 PM

Office Bangkok (Sukhumvit 39)

Piya International Co.,LTD
59 / 3 Sukhumvit 39 , Klongton -Nue Wattana , Bangkok 10110
Tel: 02-262-0030 , 094-985-8888
Fax: 02-262-0029
sales@piromatvineyard.com
www.piromatvineyard.com
Open Mon - Fri from 8.30 AM - 5 PM