



**PIROM**

*at Vineyard*

*Living Beyond Luxury*



Pirom At Vineyard is real estate project for who passionate privacy and nature surrounded by peaceful nature. The whole project area has different contour that still remain high-low ground. Your living life will enjoy the beautiful scenery and four Lakesides atmosphere around 'Pirom At Vineyard' on over 800 Rais.



# MASTER PLAN



**Developer:** Piya International Co.,LTD

**Land Area:** 800 Rais

**No. of zone:** 2 zone (A and B)

**LOCATION:** Pirom At Vineyard is located at Kut Khla - Pansuk Road, Phayayen, Pakchong, Nakhon Ratchasima. To travel from Bangkok to Pirom At Vineyard, It takes about 1 - 2 hour by taking the route from Bang Pa In to Mittraphap Road and driving for 2 more kilometers same direction as PB Valley. The destination is Pirom At Vineyard which has total land over 800 Rais and currently developing 2 Phases.



# PHASE A (LAKE VIEW)



## Phase A Lake View

Land Size: 45 Rais

No. of Plots: 22 Plots

Plot size: 400 - 1400 sq.wah.

## STARTING PRICE

**55,000** THB per square wah

This price may be changed without prior notice



# PHASE B (MOUNTAIN VIEW)



## Phase B Mountain View

Land Size: 54 Rais

No. of Plots: 50 Plots

Plot size: 350 - 600 sq.wah.

## STARTING PRICE

**40,000** THB per square wah

This price may be changed without prior notice



You can select home designs that are designed by the leading architect, Boonlert Hemvijitrathan. Creating and caring every detail by selecting natural materials without artificiality to keep luxurious made Valley house be comfortable in nature, wind, sun, and let you explore the most appealing scenery all dimensions. Four house types include Valley, Courtyard, Barn, and Horizontal.

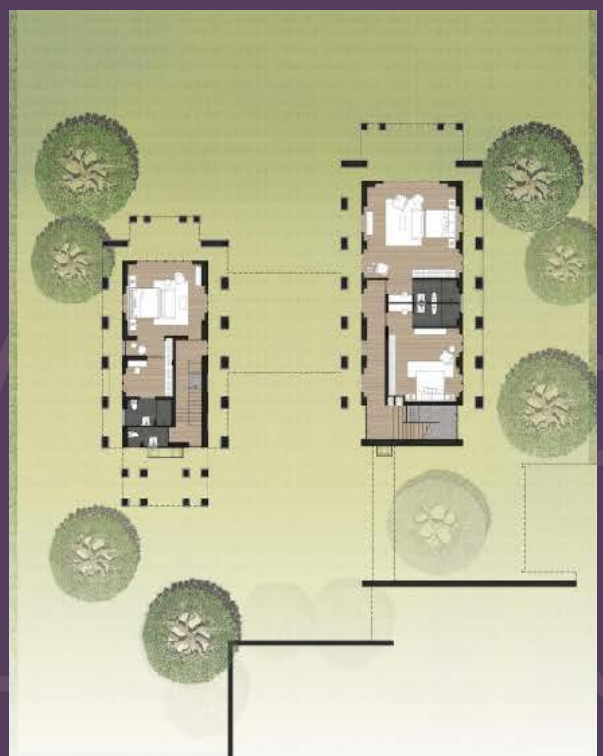


# VALLEY



Gross Area: 893 sq.m.  
Usable Area: 495 sq.m.

- 4 Bedrooms
- 6 Bathrooms
- 5 Parking spaces
- 2 Maid rooms
- 1 Maid bathroom



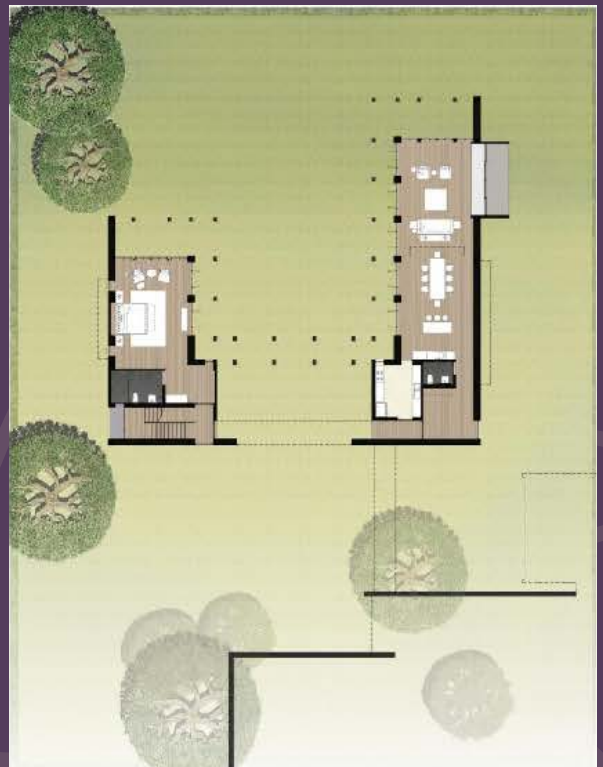


## COURTYARD



Gross Area: 830 sq.m.  
Usable Area: 477 sq.m.

- 4 Bedrooms
- 5 Bahtrooms
- 5 Parking spaces
- 2 Maid rooms
- 1 Maid bahtroom







## BARN



Gross Area: 689 sq.m.  
Usable Area: 380 sq.m.

- 3 Bedrooms
- 4 Bathrooms
- 2 Parking spaces
- 1 Maid room
- 1 Maid Bathroom



## HORIZONTAL



Gross Area: 597 sq.m.  
Usable Area: 289 sq.m.

3 Bedrooms  
4 Bath rooms  
2 Parking spaces







# TRANSPORTATION





## M6 Bang Pa-in - Nakhon Ratchasima Motorway

### Toll Plaza

- |              |                 |
|--------------|-----------------|
| 1 Bang Pa-in | 6 Muak Lek      |
| 2 Wang Noi   | 7 Pak Chong     |
| 3 Hin Kong   | 8 Sikhio        |
| 4 Saraburi   | 9 Kham Thale So |
| 5 Kaeng Khoi |                 |



**Rest Stop**  
(not included in this Project)

- Wang Noi
- Nong Khae
- Thapkwang
- Lamtakong
- Kham Thale So

**Service Area**  
(not included in this Project)

- Saraburi
- Sikhio

**Service Center**  
(not included in this Project)

- Pak Chong

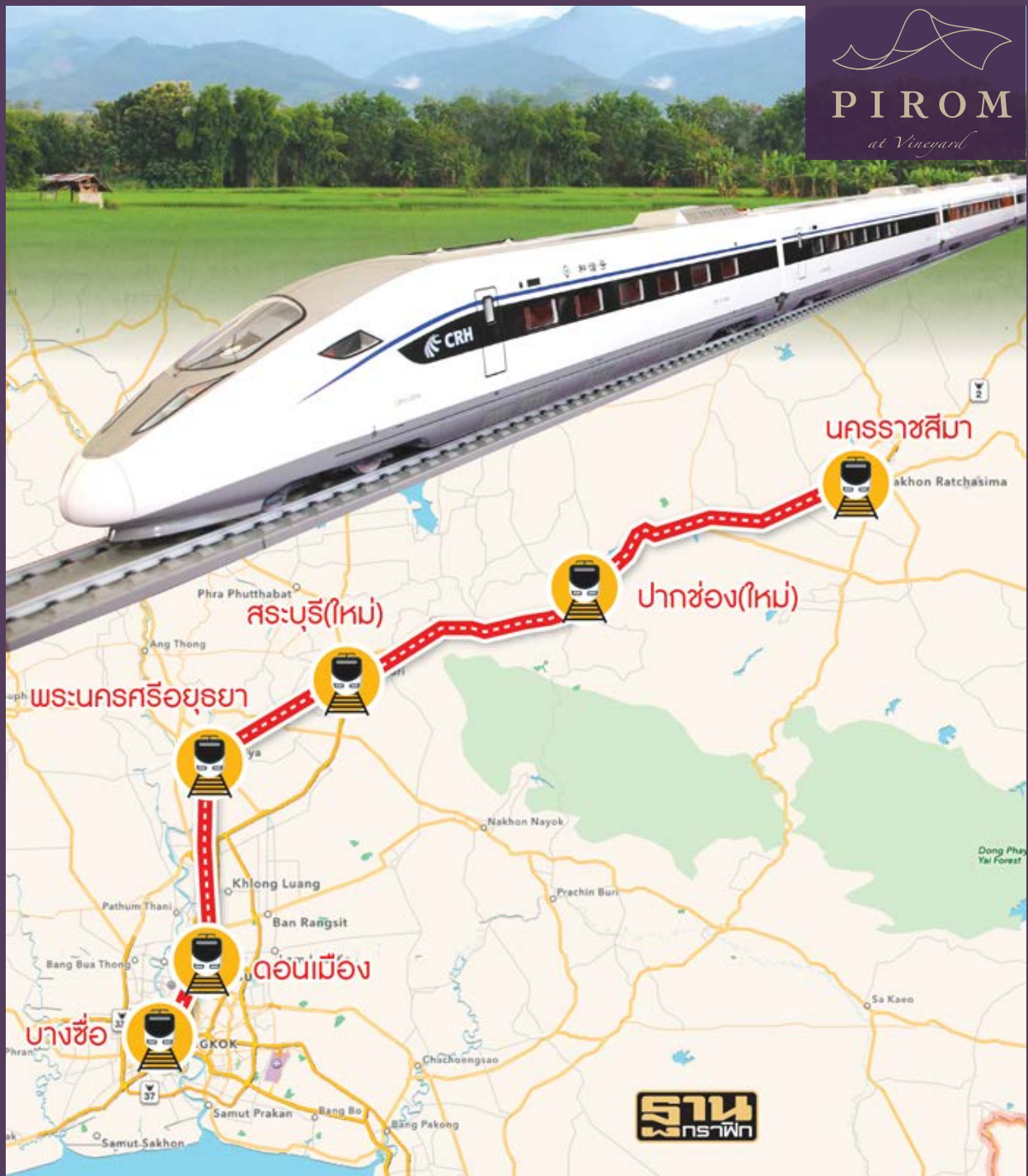
**Project Route Alignment**

- Highway
- City Area

Currently, the government is running under constructed infrastructure projects which are motorway and high speed railway. Bang Pa In - Korat Motorway, you can take the nearest exit at Muak Lek.

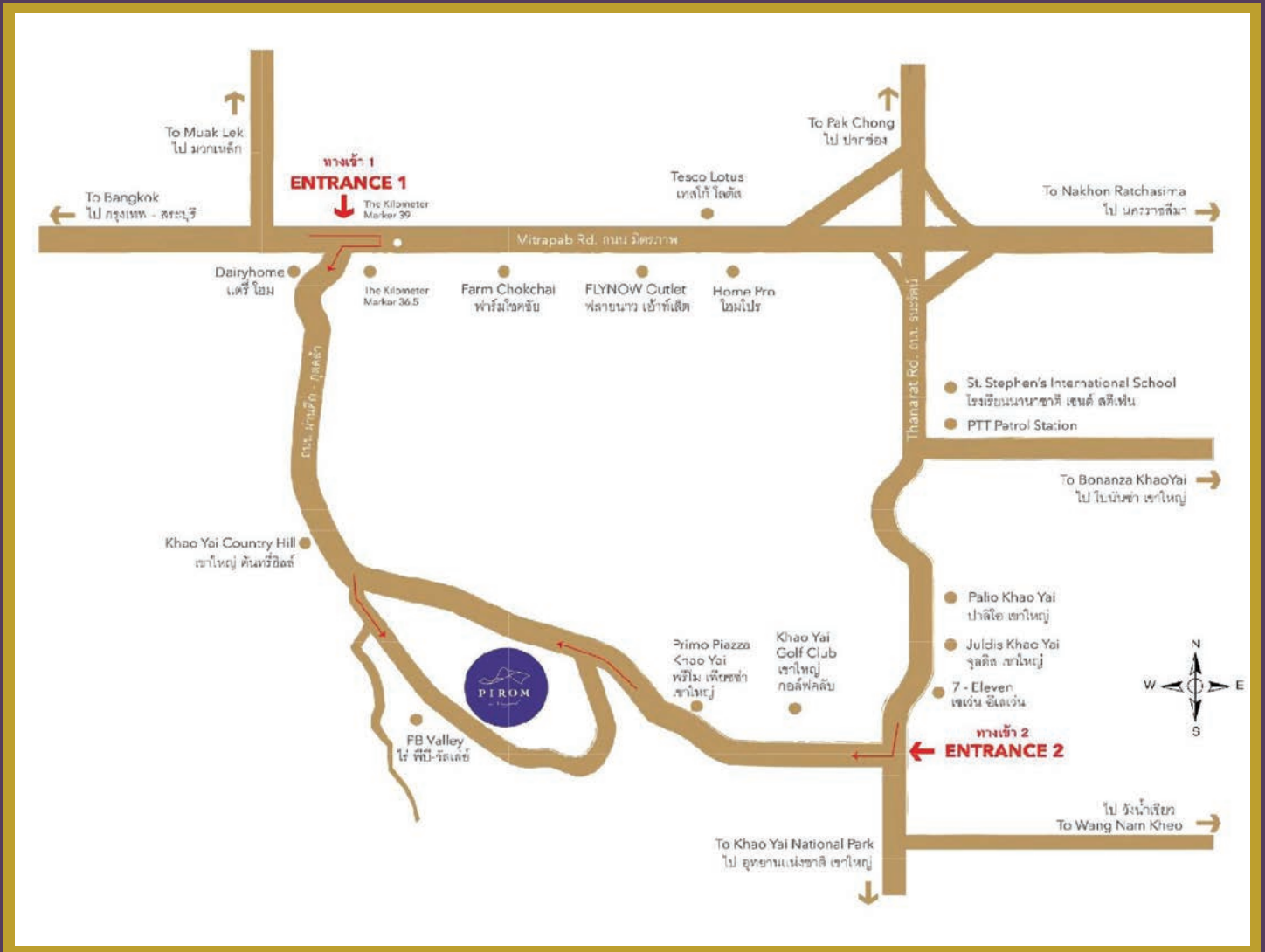


# THAI-CHINESE HIGH SPEED RAIL



High-speed railway Bangkok - Nakhon Ratchasima is under construction, you can take the railway from Bang Sue to nearest exit Kaeng Khoi station. Motorway and High Speed Rail are expected to be finished by 2022. In the near future, traveling from Bangkok to Pirom At Vineyard will be more convenient.

# PROJECT LOCATION



## CONTACT US

### Sales Gallery (Onsite)

Pirom At Vineyard  
234 Moo 5 , Phaya-Yen Sub-district , Pak Chong District , Nakhon Ratchasima 30320  
Tel: 094 - 782 - 5442  
Open daily from 9 AM - 6 PM

### Office Bangkok (Sukhumvit 39)

Piya International Co.,LTD  
59 / 3 Sukhumvit 39 , Klongton-Nue Sub-district , Wattana District , Bangkok 10110  
Tel: 02 - 262 - 0030 , 094 - 985 - 8888  
Fax: 02 - 262 - 0029  
sales@piromatvineyard.com  
www.piromatvineyard.com  
Open Mon - Fri from 8.30 AM - 5 PM